



*FCA12PA*

*FCA15PA*

PROFESIONAL SOUND  
12"/15" 2-WAY MOULDED  
LOUDSPEAKER

**User Manual**



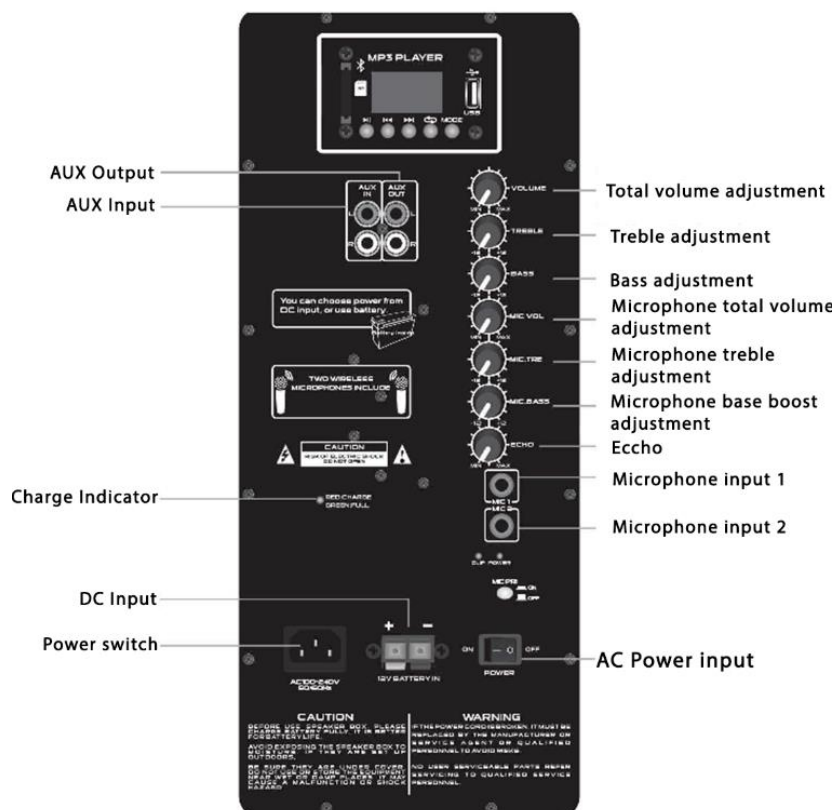
### 1. Packing Contents

- 1x Speaker
- 2x UHF Wireless microphones
- 1x IR Remote control
- 1x Power cable
- 1x User guide

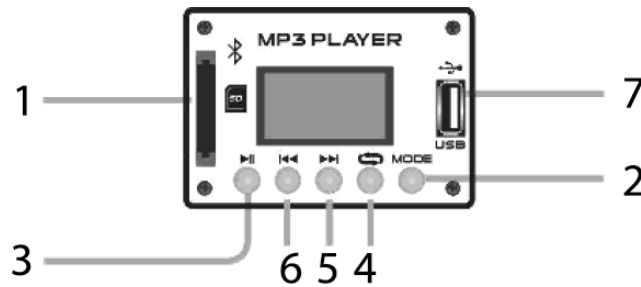
### 2. Specifications

MODEL	FCA12PA	FCA15PA
Type	ACTIVE SPEAKER	ACTIVE SPEAKER
Input	AC 100-240V,50/60Hz, DC12V, or battery	AC 100-240V,50/60Hz, DC12V, or battery
Woofer	12 inch	15 inch
coil	1.5"(38mm)	1.5"(38mm)
Magnet	30 Oz	40 Oz
Sensitivity	91dB (+/-3dB)	93dB (+/-3dB)
Frequency	20Hz- 20kHz	20Hz- 20kHz
Tweeter	25mm	25mm
Power	80W	100W
Function	USB, SD, FM, Bluetooth	USB, SD, FM, Bluetooth
Remote control	YES	YES
Battery	12V, 5AH	12V, 7AH
UHF mic	2 UHF (863.1/864.5MHZ)	2 UHF (863.1/864.5MHZ)

### 3. Amplifier



#### 4. Player Control

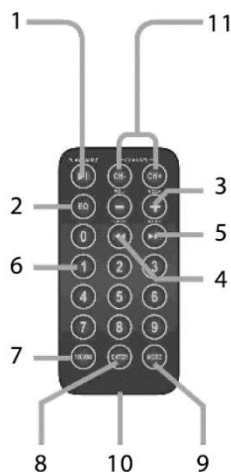


1. **SD card slot:** Use it to insert a SD card with Mp3 files.
2. **Model:** Select an operating modality, the options are SD, USB, FM.
3. **Play /Pause:** Press to play a song or pause while playing a song.
4. Press once to select a player mode, the options are:
  - One: Select this to play current song indefinitely.
  - All: With this option you can repeat all music.
5. **Next/Volume +:** Press once to jump next song /press and hold to raise the volume level.
6. **Previous /Volume -:** Press once to jump previous song/Press and hold to diminish the volume level. 7.
7. USB input with Mp3 file.

#### Bluetooth connection

1. To pair the speaker with a Bluetooth phone or audio device, press "MODE" repeatedly on the MP3 player until select this mode.
2. Put your phone or device to be used in Bluetooth device discovery mode.
3. When your phone or device shows the "BLUETOOTH" device, confirm the link.

#### 5. Remote Control



1. Press to play a song or pause while playing a song. Program radio FM stations.
2. In play mode press to set one equalizer mode.
3. Vol+ /Vol-
4. **Previous:** Press once to jump previous song press and hold to rewind.
5. **Next:** Press once to jump next song, press and hold to fast-froward
6. **Keys:** Use this key to select the number of a desired track.
7. **Pick song:** Allows you to select the song want to listen to so direct, for example: if you want to hear the song no. 11, first press the number 11 then press this button.
8. **ENTER:** Choose repeat mode.
9. **MODEL:** Select an operating modality, the options are SD/USB.FM radio and AUX.
10. Battery compartment (CR2025)
11. Select a FM frequency.

## **6. Caution**

- Avoid exposing the speaker box to moisture. If they are set up outdoors, be sure they are under cover.
- Do not use or store the equipment near wet or damp places. It may cause a malfunction or shock hazard.
- If the power cord is broken, it must be replaced by the manufacturer OR SERVICE AGENT or qualified personnel to avoid risks.
- To reduce the risk of fire or electric shock. do not expose this equipment to rain or moisture.
- Clean only with a soft, dry cloth.